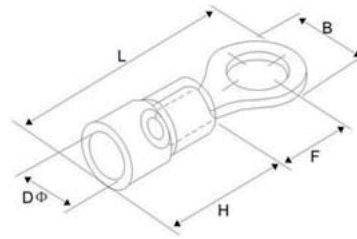
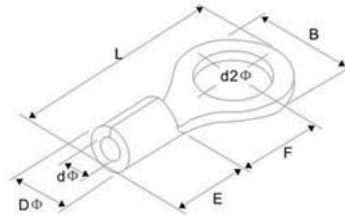


Insulated Ring terminals



ITEM NO	Bolt No.	Dia of Bolt	Dimension(mm)				Color	Specification	
		d2	B	L	F	E			D
RV 1.25-3	#4	3.2	5.7	17.8	4.95	10.0	4.3	● Red	Terminal material: red copper conductor section: 0.5-1.5 mm ² (A.W.G: 22-16) Max Current: I max = 19A thickness: 0.7mm
RV 1.25-3.5S	#6	3.7	5.7	17.8	4.95				
RV 1.25-3.5M	#6	3.7	6.6	20.1	6.3				
RV 1.25-3.5L	#6	3.7	7.2	21.5	7.0				
RV 1.25-4S	#8	4.3	6.6	20.1	6.3				
RV 1.25-4L	#8	4.3	8.0	21.5	7.0				
RV 1.25-5S	#10	5.3	8.0	21.5	7.0				
RV 1.25-5L	#10	5.3	9.5	23.0	8.0				
RV 1.25-5LL	#10	5.3	11.6	27.5	11.1				
RV 1.25-6S	1/4	6.5	9.5	23.0	8.0				
RV 1.25-6	1/4	6.5	11.6	27.5	11.1				
RV 1.25-8	5/16	8.5	11.6	27.5	11.1				
RV 1.25-10	3/8	10.5	13.6	31.6	13.9				
RV 1.25-10L	3/8	10.5	19.2	35.0	16.0				
RV 1.25-12	1/2	13.0	19.2	35.0	16.0				
RV 2-3	#4	3.2	6.6	17.8	4.3	10.0	4.9	● Blue	Terminal material: red copper conductor section: 1.5-2.5mm ² (A.W.G: 16-14) Max Current: I max = 27A thickness: 0.8mm
RV 2-3.5S	#6	3.7	6.6	17.8	4.3				
RV 2-3.5M	#6	3.7	6.6	21.0	7.0				
RV 2-3.5L	#6	3.7	8.5	22.5	7.75				
RV 2-4S	#8	4.3	6.6	21.0	7.00				
RV 2-4L	#8	4.3	8.5	22.5	7.75				
RV 2-5S	#10	5.3	8.5	22.5	7.75				
RV 2-5L	#10	5.3	9.5	22.5	7.25				
RV 2-6S	1/4	6.5	9.5	22.5	7.25				
RV 2-6	1/4	6.5	12.0	27.6	11.0				
RV 2-8	5/16	8.5	12.0	27.6	11.0				
RV 2-10	3/8	10.5	13.6	30.2	13.9				
RV 2-10L	3/8	10.5	19.3	35.0	16.0				
RV 2-12	1/2	13.0	19.2	35.0	16.0				
RV 3.5-4	#8	4.3	8.0	24.5	7.7	12.5	6.2	● Black	Terminal material: red copper conductor section: 2.5-4 mm ² (A.W.G: 14-12) Max Current: I max = 37A thickness: 1.0mm
RV 3.5-5S	#10	5.3	8.0	24.5	7.7				
RV 3.5-5L	#10	5.3	12.0	27.9	7.7				
RV 3.5-6	1/4	6.5	12.0	27.9	7.7				
RV 3.5-8	5/16	8.5	15.0	32.0	13.5				
RV 3.5-10	3/8	10.5	15.0	32.0	13.6				
RV 3.5-12	1/2	13.0	19.2	38.1	16.0				
RV 5.5-3.5	#6	3.7	7.2	21.4	5.9	12.5	6.7	● Yellow	Terminal material: red copper conductor section: 4-6 mm ² (A.W.G: 12-10) Max Current: I max = 48A, thickness: 1.0mm
RV 5.5-4S	#8	4.3	7.2	21.4	5.9				
RV 5.5-4L	#8	4.3	9.5	25.5	8.3				
RV 5.5-5	#10	5.3	9.5	25.5	8.3				
RV 5.5-6	1/4	6.5	12.0	31.5	13.0				
RV 5.5-8	5/16	8.5	15.0	33.7	13.7				
RV 5.5-10	3/8	10.5	15.0	33.7	13.7				
RV 5.5-12	1/2	13.0	19.20	38.1	16.0				

Non-Insulated Ring Terminals



ITEM NO	Bolt No.	Dia of Bolt	Dimension(mm)						Specification
		d2(mm)	B	L	F	E	D	d	
RNB 1.25-3	#4	3.2	5.7	12.6	4.95	4.8	3.4	1.7	Terminal material: red copper conductor section: 0.5-1.5 mm ² (A.W.G: 22-16) Max Current: I max = 19A thickness: 0.7mm
RNB 1.25-3.5S	#6	3.7	5.7	12.6	4.95				
RNB 1.25-3.5M	#6	3.7	6.6	14.4	6.3				
RNB 1.25-3.5L	#6	3.7	7.2	15.8	7				
RNB 1.25-4S	#8	4.3	6.6	14.4	6.3				
RNB 1.25-4L	#8	4.3	8.0	15.8	7				
RNB 1.25-5S	#10	5.3	8.0	15.8	7				
RNB 1.25-5L	#10	5.3	9.5	18	8.5				
RNB 1.25-5LL	#10	5.3	11.6	21.8	11.1				
RNB 1.25-6S	1/4	6.5	9.5	18	8.5				
RNB 1.25-6	1/4	6.5	11.6	21.8	11.1				
RNB 1.25-8	5/16	8.5	11.6	21.8	11.1				
RNB 1.25-10	3/8	10.5	13.6	25.5	13.9				
RNB 1.25-10L	3/8	10.5	19.2	30.4	16				
RNB 1.25-12	1/2	13	19.2	30.4	16				
RNB 2-3	#4	3.2	6.6	12.3	4.3	4.8	4.1	2.3	Terminal material: red copper conductor section: 1.5-2.5 mm ² (A.W.G: 16-14) Max Current: I max = 27A thickness: 0.8 mm
RNB 2-3.5S	#6	3.7	6.6	12.3	4.3				
RNB 2-3.5M	#6	3.7	6.6	16	7				
RNB 2-3.5L	#6	3.7	8.5	16.8	7.75				
RNB 2-4S	#8	4.3	6.6	16.8	7				
RNB 2-4L	#8	4.3	8.5	16.8	7.75				
RNB 2-5S	#10	5.3	8.5	16.8	7.75				
RNB 2-5L	#10	5.3	9.5	16.8	7.25				
RNB 2-6S	1/4	6.5	9.5	16.8	7.25				
RNB 2-6	1/4	6.5	12	21.8	11				
RNB 2-8	5/16	8.5	12	21.8	11				
RNB 2-10	3/8	10.5	13.6	25.5	13.9				
RNB 2-10L	3/8	13	19.2	30.4	16				
RNB 2-12	1/2	13	19.2	30.4	16				
RNB 3.5-4	#8	4.3	8	18	7.7	6	5	3	Terminal material: red copper conductor section: 2.5-4 mm ² (A.W.G: 14-12) Max Current: I max = 37A thickness: 1.0mm
RNB 3.5-5S	#10	5.3	8	18	7.7				
RNB 3.5-5L	#10	5.3	12	21.4	7.7				
RNB 3.5-6	1/4	6.5	12	21.4	7.7				
RNB 3.5-8	5/16	8.5	15	27	13.5				
RNB 3.5-0	3/8	10.5	15	27	13.5				
RNB 3.5-12	1/2	10.5	19.2	32.4	16				
RNB 5.5-3.5	#6	3.7	7.2	15.7	5.9	6.8	5.6	3.4	Terminal material: red copper conductor section: 4-6mm ² (A.W.G: 12-10) Max Current: I max = 48A thickness: 1.0 mm
RNB 5.5-4S	#8	4.3	7.2	15.7	5.9				
RNB 5.5-4L	#8	4.3	9.5	19.8	8.3				
RNB 5.5-5	#10	5.3	9.5	19.8	8.3				
RNB 5.5-6	1/4	6.5	12	25.8	13				
RNB 5.5-8	5/16	8.5	15	28	13.7				
RNB 5.5-10	3/8	10.5	15	28	13.7				
RNB 5.5-12	1/2	13	19.2	32.4	16				